

<b>Case Study 004</b>	<b>from <a href="http://www.communityplanning.net">www.communityplanning.net</a></b>
<b>Theme</b>	<b>Youth facilities</b>
<b>Project Title</b>	<b>Youth space</b>
<b>Location</b>	West Midlands, UK. Six locations: Coleshill, Warwickshire; Hunderton, Hereford; Romsley, Bromsgrove; Stechford, Birmingham; Warndon, Worcester; Penn Island, Wolverhampton
<b>Project leader</b>	Midlands Architecture and the Designed Environment (MADE)



A collaborative design project between young people, architects and artists, for the design and construction of six custom-made youth shelters. An innovative pilot programme, which demonstrates the potential of effective and creative community consultation and collaboration processes in improving both the environment and people's lives.

## Context

- The emergence of the concept of 'Anti-Social Behaviour' and the introduction of the UK's Crime and Disorder Act of 1998 galvanised the resolve of practitioners to deal with issues affecting their communities. Local Snowdown Colliery (1 mile to south) closed in 1986 and since then the village has declined.
- A number of strategies were developed, particularly amongst young people. These included more use of 'youth shelters'. This led to a significant increase in the UK's manufactured youth shelter products: metal, bus-shelter-like forms, being the teenager's equivalent of playground equipment for children. On the basis that young people need at least the option of somewhere of their own to hang out in, the off-the-shelf youth shelter continues to provide a ready-made facility to address a functional need.
- A number of strategies were developed, particularly amongst young people. These included more use of 'youth shelters'. This led to a significant increase in the UK's manufactured youth shelter products: metal, bus-shelter-like forms, being the teenager's equivalent of playground equipment for children. On the basis that young people need at least the option of somewhere of their own to hang out in, the off-the-shelf youth shelter continues to provide a ready-made facility to address a functional need.
- GOWM then asked MADE to devise a project model and methodology to engage young people in the design and construction of youth spaces. GOWM wanted to start to measure the impact of this approach on anti-social behaviour and to assess any correlation between crime reduction and engagement. Illustrating the new breadth and complexity of the agenda, it was decided to replace the term 'youth shelter' with that of 'youth space'.

## Process

### *Year Month Activity*

<i>Year</i>	<i>Month</i>	<i>Activity</i>
2003	Jun	<b>National Youth Spaces Seminar</b> Think tank convening experts from the fields of youth, community, crime prevention and urban design generates inspiration for project on youth shelters.
2003	Jul Aug Sep Oct Nov Dec	<b>Project planning</b> Project design and methodology developed by MADE at request of regional government office. Funding approved from UK government regeneration funds

2004	Jan	<b>Expressions of interest</b>	From regional community safety teams. Potential sites and groups of young people identified.		
2004	Feb	<b>Local client teams selected in six locations</b>	By Government Office for The West Midlands and MADE based on the individual circumstances and needs of the applicants.		
2004	Mar				
2004	Apr May	<b>Shelter Design</b>	Process varied in each area. Elements included: <ul style="list-style-type: none"> <li>• Events and publicity to generate interest including Architecture Week events</li> <li>• Collaborative design workshops on site</li> <li>• Precedent studies (looking at examples elsewhere)</li> <li>• Curriculum based workshop sessions and competitions in local schools</li> <li>• Exhibitions and public consultation for the local community (including the elderly and young children)</li> <li>• Site visits and workshops with main contractor; attendance by young people at all design team and site meetings.</li> <li>• Collaborative design workshops with existing clubs and organisations in the area.</li> </ul>		
2004	Jun Sept				
2004	Oct Nov Dec	<b>Detailed design</b>	By architects in collaboration with the design team, fabricators and potential contractors. Permissions obtained		
2005	Jan				
2005/ 2006	Feb Mar Apr May Jun Jul Aug Sep Oct Nov Dec Jan Feb Mar Apr May Jun Jul Aug Sep	<b>Fabrication</b>  Of building elements in local factories	<b>Construction</b>  On site works. Helped by young people and design teams.	<b>Completion</b>  Shelters open for use. Launch ceremonies.	<b>Publicity</b>  Publication and film produced to disseminate information about the pilots and stimulate similar projects elsewhere.

## Outcomes

### Successes

- Six pilot projects resulting in six very different new youth shelters, of high design quality.
- Creative involvement of many young people: A core group of 100 and a wider group of 500 -1000.
- Collaboration of many professionals and organizations: Total number of artists and Architect practices: 14. Total number of partners: 45.
- Anecdotal and statistical evidence of reduced crime and antisocial behaviour.
- Dramatic and positive change in the young people taking part.

### Shortcomings

- Unrealistic foresight into the design process and construction costs of the shelters resulting in 2 shelters being delayed and requiring further fundraising.

## Parties involved

<i>Party</i>	<i>Role</i>
<b>Core project</b>	
<b>Midlands Architecture and the Designed Environment (MADE)</b> <a href="http://www.made.org.uk">www.made.org.uk</a>	Overall direction and project management
<b>Government Office of The West Midlands (GOWM)</b> <a href="http://www.go-wm.gov.uk">www.go-wm.gov.uk</a>	Main sponsor
<b>Commission for Architecture and the Built Environment (CABE)</b> <a href="http://www.cabe.org.uk">www.cabe.org.uk</a>	MADE sponsor and specific funder of Youth Space inc. Publication and film
<b>Advisory Centre for Education (ACE)</b> <a href="http://www.ace-ed.org.uk">www.ace-ed.org.uk</a>	MADE sponsor and specific funder of Youth Space inc. Publication and film
<b>West Mercia Constabulary</b> <a href="http://www.westmercia.police.uk">www.westmercia.police.uk</a>	Sponsor of Publication and film
<b>Speller Metcalfe Ltd (Contractors), Malvern</b>	Sponsor of Publication and film

<i>Party</i>	<i>Role</i>
<b>Pilot Project 1: Coleshill, Warwickshire</b>	
<b>Government Office West Midlands (GOWM)</b> <a href="http://www.go-wm.gov.uk">www.go-wm.gov.uk</a>	Sponsor
<b>Warwickshire County Council Arts Project</b>	Sponsor
<b>Warwickshire County Council Youth Project</b>	Sponsor
<b>Sabine Gollner in collaboration with Mueller Kneer Associates</b>	Design Team - Architect
<b>Alisha Miller</b>	Design Team - Artist

<b>Coleshill Young People</b>	Design team
<b>Coleshill School</b>	Design team
<b>Community Beat Officer, Coleshill Town Police</b>	Design team
<b>Local councilor</b>	Design team
<b>Form Fabrications, Birmingham</b>	Fabricator

***Party***

***Role***

<b>Pilot Project 2: Hunderton, Hereford</b>	
<b>Government Office West Midlands (GOWM) www.go-wm.gov.uk</b>	Sponsor
<b>Single Regeneration Budget, South Wye</b>	Sponsor
<b>Landmark Consultants</b>	Design Team - Architect
<b>Dr Sally Payen in collaboration with Silva Productions, Hereford</b>	Design Team - Artist
<b>Hereford Young People</b>	Design team
<b>Principal Leisure and Countryside Recreation Officer, Herefordshire Council</b>	Design team
<b>Herefordshire Council Youth Services</b>	Design team
<b>Publics Art Route CIC</b>	Project Manager
<b>Jenny Pickford, Hereford</b>	Fabricator - Blacksmith

***Party***

***Role***

<b>Pilot Project 3: Romsley, Bromsgrove</b>	
<b>Sabine Gollner in collaboration with Mueller Kneer Associates</b>	Design Team - Architect
<b>It's About Time Productions</b>	Design Team - Artist
<b>Romsley Young People</b>	Design team
<b>Romsley Parish Council</b>	Design team
<b>Community Safety Partnerships Officer, Bromsgrove District Council</b>	Design team
<b>Senior Youth Worker, Worcestershire County Council</b>	Design team
<b>Parks Officer, Bromsgrove District Council</b>	Design team

<i>Party</i>	<i>Role</i>
<b>Pilot Project 4: Stechford, Birmingham</b>	
<b>Government Office West Midlands (GOWM) www.go-wm.gov.uk</b>	Sponsor
<b>Yardley Old Park Trust</b>	Sponsor
<b>Birmingham Youth Offending Service</b>	Sponsor
<b>SITA Trust</b>	Sponsor
<b>Neighbourhood Renewal Fund</b>	Sponsor
<b>Birmingham City Council</b>	Sponsor
<b>Stechford Police funded the Youth Intervention Supervisor</b>	Sponsor
<b>Patricia Gomez</b>	Design Team - Architect
<b>Carolyn Morton</b>	Design Team - Artist
<b>Stechford Young People</b>	Design team
<b>Youth Intervention Supervisor, Stechford Police</b>	Design team
<b>Birmingham City Council- Landscape Dept.</b>	Design team
<b>Form Fabrications, Birmingham</b>	Fabricator

<i>Party</i>	<i>Role</i>
<b>Pilot Project 5: Warndon, Worcester</b>	
<b>Government Office West Midlands (GOWM) www.go-wm.gov.uk</b>	Sponsor
<b>South Worcestershire Community Safety Partnership</b>	Sponsor
<b>Garfield Weston Foundation</b>	Sponsor
<b>William A. Cadbury Charitable Trust</b>	Sponsor
<b>Worcester Community Housing</b>	Sponsor
<b>The Eveson Trust</b>	Sponsor
<b>The Elmley Foundation</b>	Sponsor
<b>Glazzard Architects, Worcester</b>	Design Team - Architect
<b>Dr Sally Payen, Hereford</b>	Design Team - Artist
<b>Warndon Young People</b>	Design team
<b>Community Safety Manager, Worcester City Council</b>	Design team
<b>Youth Worker, Worcester City Council</b>	Design team

<b>Community Beat Officer, West Mercia Constabulary</b>	Design team
<b>Speller Metcalfe Ltd, Malvern</b>	Main Contractor
<b>FCR Fabrications, Gloucester</b>	Fabricator

*Party*

*Role*

#### **Pilot Project 6: Penn Island, Wolverhampton**

<b>Government Office West Midlands (GOWM) www.go-wm.gov.uk</b>	Sponsor
<b>All Saints and Blakenhall Community Development Partnership, Wolverhampton</b>	Sponsor
<b>Ibstock Atlas, Aldridge, West Midlands</b>	Sponsor
<b>Wolverhampton City Council</b>	Sponsor
<b>All Saints and Blakenhall Community Development Partnership, Wolverhampton</b>	Sponsor
<b>Wolverhampton School of Art</b>	Sponsor
<b>Sjolander da Cruz Architects, Birmingham</b>	Design Team - Architect
<b>Gwen Heeney</b>	Design Team - Artist
<b>Wolverhampton Young People</b>	Design team
<b>Wolverhampton City Council Youth Service City Centre Team</b>	Design team
<b>Wolverhampton Art Gallery</b>	Project Manager

## **Funding and resources**

- Total funding from Government Office for The West Midlands: £137,000
- Total funding from other partners (to March 2006): £140,000

## Photographs

Two images from each of the six pilot projects



**Coleshill Shelter completed**  
*Coleshill 1 MK.jpg*  
Copyright Mueller Kneer Associates



**Coleshill Shelter in use**  
*Coleshill 2 SG.jpg*  
Copyright Sabine Gollner



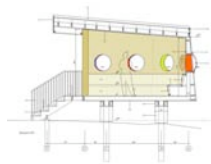
**Hunderton model**  
*Hereford 1 VB.jpg*  
Copyright Vanessa Brothwell



**Hunderton design meeting**  
*Hereford 2 CS.jpg*  
Copyright Chris Smart



**Romsley design image**  
*Romsley 1 MK.jpg*  
Copyright Mueller Kneer Associates



**Romsley design**  
*Romsley 2 MK.jpg*  
Copyright Mueller Kneer Associates



**Stechford completed**  
*Stechford 1 PG.jpg*  
Copyright Patricia Gomez



**Stechford design workshop**  
*Stechford 2 CM.jpg*  
Copyright Carolyn Morton



**Penn Island design exercise**  
*Wolves 2 SdaC.jpg*  
Copyright Sjolander da Cruz Architect



**Penn Island model**  
*Wolves SdaC 1.jpg*  
Copyright Sjolander da Cruz Architects



**Warndon in use**  
*Worcester 1 CS.jpg*  
Copyright Chris Smart



**Warndon completed**  
*Worcester 2 SP.jpg*  
Copyright Sally Payen

## Videos

Youth Space film. Inspiring 20 minute DVD featuring interviews with participants and showing the design and construction process for four of the pilot projects.

Copies of the Youth Space book and DVD of the accompanying film are available from MADE priced £10.99. Please contact Sally Robertshaw on +44 (0)121 633 9333 or [sally@made.org.uk](mailto:sally@made.org.uk) for further details

## Documents

Download from website at: <http://www.communityplanning.net/casestudies/004/10docs/index.htm>

Youth Space: A collaborative youth shelter project connecting young people, architects and artists, MADE, 2006

Copies of the Youth Space book and DVD of the accompanying film are available from MADE priced £10.99. Please contact Sally Robertshaw on +44 (0)121 633 9333 or [sally@made.org.uk](mailto:sally@made.org.uk) for further details.

## Quotes

'You feel like you can do a lot more than you ever thought you could, more self esteem... young people would feel offended if a shelter was just placed there, there would be no respect. Everybody has a right to feel comfortable in their place that they use everyday'

**Young person, Coleshill Design Team**

'Outside recreation facilities, or as they would put it "somewhere to chill out", are a very common need raised by the young people I work with. When I'm proposing projects like this to adults I usually get them to imagine what they would do with their free time if they had little or no disposable income, could not go to the pub, or be welcomed in a café. If they did not have their own cars, homes or gardens to relax in, where would they go? Young people are just adults without the same benefits of adulthood.'

**Sarah Melia, South Hereford Patch Youth Worker, Herefordshire Council**

'The young people gained an understanding of the design process; an understanding of possible restraints and reasoning to why they can't always get exactly what they want. The young people felt they were able to look at things from a different angle and become more tolerant of others'

**Eve Schofield, Youth Intervention Supervisor**

'Students working with non teachers, that is professionals, learn a different approach, a different way of communicating and working with adults and in this particular project they have had an additional outcome - a tangible outcome'

**Kate Kearney, Head teacher, Coleshill School**

'Using photography as a workshop medium, resulted in a high-energy exercise which was really successful in terms of bringing the team together. These designs, inspired by the shapes and outlines of the young people, were wrapped around the shelter to encourage ownership and make the space more specific to the age group.'

**Dr Sally Payen, Artist**

'The phrase 'youth shelter' conjures up an image of glorified play equipment, something patronising and inappropriate...but it's the process of raising their visual aspirations that's as important as any shelter that is a result of it.'

**Marco da Cruz, Architect**

## Reviews/comments

'The new designs published by the MADE project are all very distinct and interesting. Some features are found in common, whilst others are unique to the site and the particular group of children and young people involved in their design. A bold use of colour and an astonishing variety of sculptural forms are evident. It is clear that the basic structure of the youth shelter owes much to that traditional hanging-out place of children in both rural and urban centres – the bus shelter. Protection from the rain, a bench seat, but within view of the passing world and very much part of the public domain: this is the basic architectural programme of youth shelters currently conceived.'

**Extract from *Youth Space: Part Three, Articles, Page 22*; an essay by Ken Worpole, writer on urban policy, architecture and landscape.**

## Contacts and links

MADE  
122 Fazeley Street,  
Birmingham B5 5RS, UK  
Tel: +44 (0)121 633 9333  
[info@made.org.uk](mailto:info@made.org.uk)  
[www.made.org.uk](http://www.made.org.uk)

Contact:  
Vanessa Brothwell [vanessa@made.org.uk](mailto:vanessa@made.org.uk)  
Sally Robertshaw [sally@made.org.uk](mailto:sally@made.org.uk)